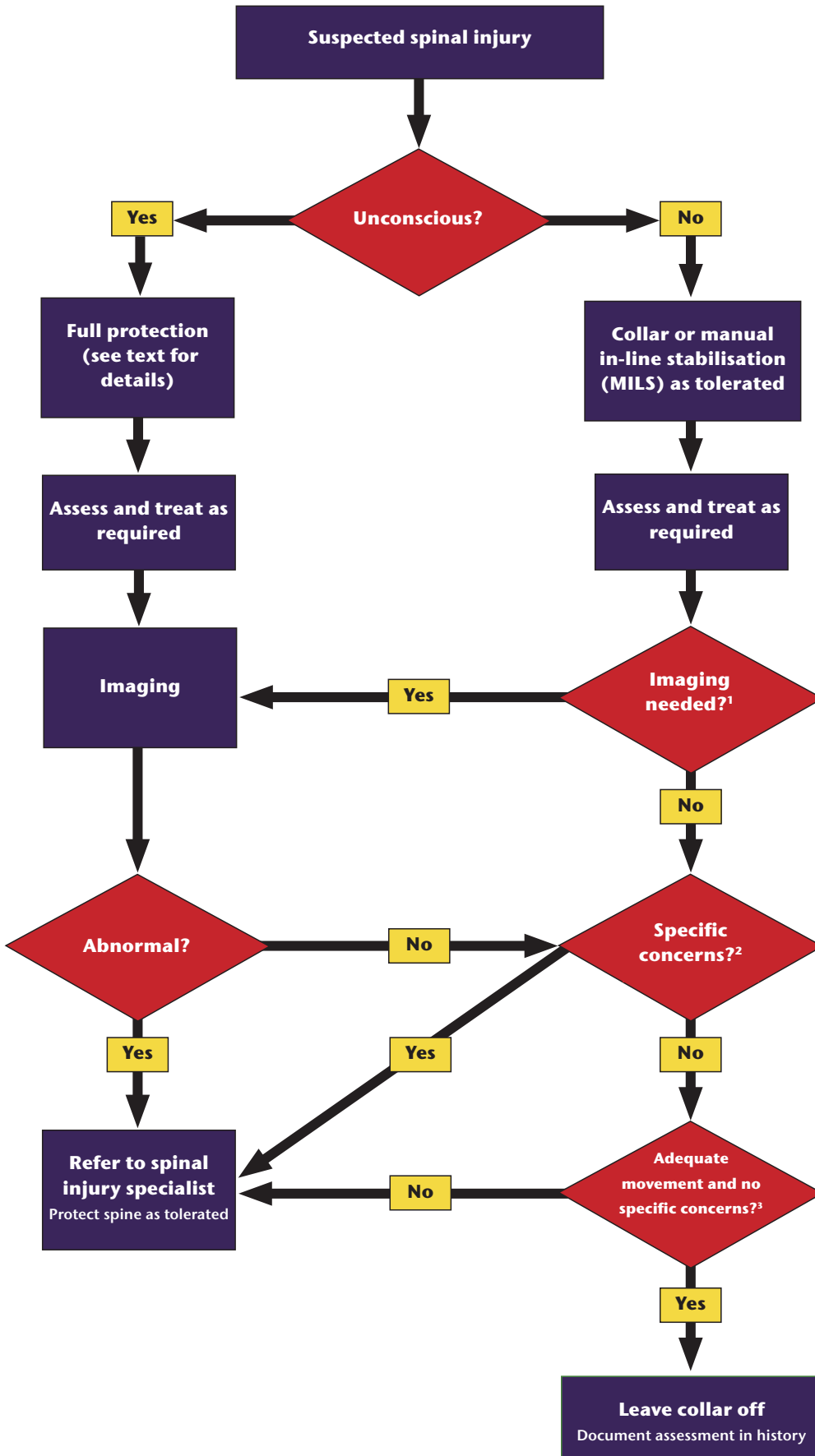


Cervical Spine Management



¹ Spinal imaging required if YES to any of the following:
 Posterior midline spinal tenderness
 Focal neurological deficit or pain
 Sedative drugs
 Painful distracting injury
 Reduced mental state

² Check for:
 Focal pain or tenderness
 Abnormal or uncertain imaging (if imaging carried out)
 Drowsy or uncooperative or unable to assess

³ Assess:
 For rotation 45° to left and right
 Controls head appropriately, tolerates rotation of trunk and bears weight when vertical